

BeSafe®

GB

Stability Strap for iZi Up User manual



Group
2/3

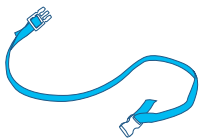
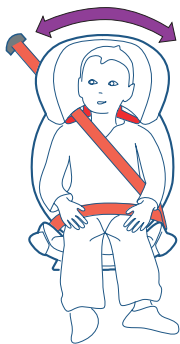
15-36
Kilos

4-12
Years

iZi Up

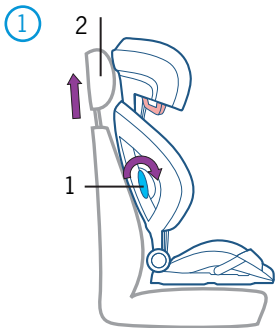
www.besafe.eu

Stability Strap for iZi Up



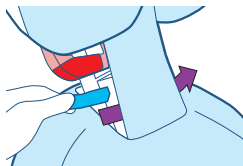
The stability strap is not an essential safety part and needs only to be used in cars where the iZi Up feels unstable.

Placing the Stability Strap

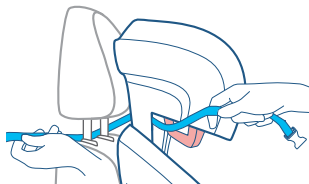


In order to apply the Stability Strap, put the iZi Up (1) and head rest of the car (2) in the most upward position.

2

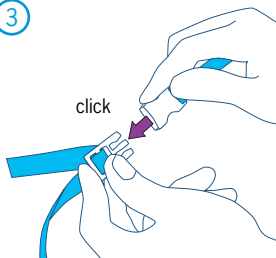


Guide the Stability Strap between the cover and surface of the iZi Up head rest.



Then guide the strap around both bars of the head rest of the car seat.

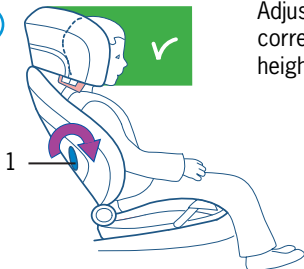
3



Connect the buckle, click.

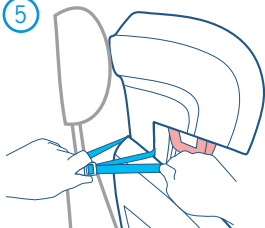
Follow step 4, 5 and 6 on the next page.

4



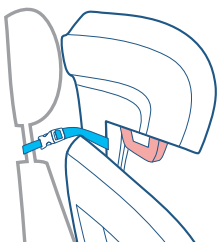
Adjust the iZi Up to the correct height by turning the height adjusting knob (1).

5



Tighten the Stability Strap to secure the iZi Up into stable position.

6



BeSafe[®]

GB
2007 - V1.0

More information:
N-3535 Krøderen, Norway
www.besafe.eu